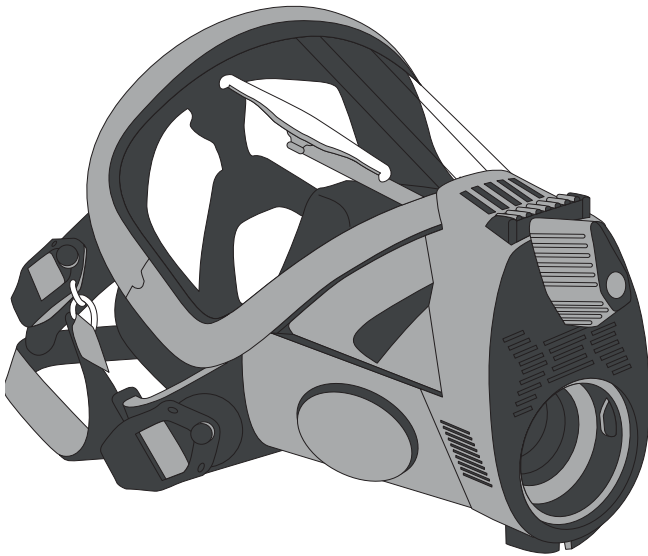


User manual

FULL FACE MASK

DEZEGA D-VISION QF

MADE IN TÜRKIYE



EN

EN136:1998

ДСТУ EN:136:2003



0477

001

Category III

SKTB.08.QF.00.00.000 PЭ-U1

QF-E(C,S)-1(2,3)1(2)C0(1)-UNUNUN

Red. 01.05.2023_V1

DEZEGA®

LIFELONG SAFETY EXPERIENCE

CONTENTS

INTRODUCTION.....	3
1. ACCIDENT PREVENTION REGULATIONS.....	3
2. CHARACTERISTICS AND PURPOSE	5
3. USE	7
4. MAINTENANCE.....	10
5. CLEANING AND DISINFECTION.....	15
6. TRANSPORTATION AND STORAGE.....	16
7. DISPOSAL.....	16
8. ORDER DETAILS.....	17
ANNEX.....	22

INTRODUCTION

This User manual is intended to study the design and the rules for use of the full face masks DEZEGA D-VISION QF (hereinafter the mask) for compressed oxygen closed-circuit self-contained breathing apparatus with positive pressure (hereinafter the breathing apparatus). It also contains instructions for the proper use of the mask.

The manual describes the operation principle, the design, the rules for preparing the mask for use, the procedure for technical condition check, and recommendations for its use and maintenance.

A range of symbols is used in the manual to attract the user's attention to the features, problems and dangerous situations, arose when using and maintaining the mask.



This symbol contains additional information about the rules, techniques and recommendations for the proper use of the mask.



This symbol indicates a dangerous situation that, if not avoided, could lead to equipment damage, personal injury, or even death of the user or service personnel.



This symbol indicates an unavoidable dangerous situation that, if no precautions are taken, could lead to serious injury or death of the user.

1. ACCIDENT PREVENTION REGULATIONS

1.1. Rules of use

The mask is manufactured as per the requirements of EN 136:1998 and DCTV EN 136:2003. It is not a full-fledged respiratory protection device. It serves as a facepiece for use with positive pressure breathing apparatus and specially designed to use with P-70 self-contained compressed oxygen breathing apparatus.

Used in conjunction with breathing apparatus, the mask is considered a respiratory protective equipment (RPE). The mask itself (all modifications as indicated in section 8.2), is classified as the PPE of category III according to the REGULATION 2016/425/EU, and CL 3 as per EN 136:1998 (CL3), and DCTV EN 136:2003.

Notified Body involved in the conformity assessment of PPE – ITALCERT S.r.l., V.le Sarca 336 - 20126 MILANO (No. 0426).

Notified Body involved in the periodical factory production control with supervised product checks according to REGULATION 2016/425/EU – Eurofins Product Testing Italy S.r.l., Via Courgnè , n.21, 10156 TORINO, ITALY (No. 0477).

EU declaration of conformity is supplied with the full face mask. Please contact manufacturer for a copy.

When using the mask, the requirements specified in this user manual must be observed. In particular, it is necessary to read and take into account the safety rules and information on the mask use and operation. National regulations and legislation in the country, where the mask is used, also should be taken into account.

The mask is ready for use, antistatic and sturdiness to open flame. The mask is intended for use in potentially explosive atmospheres.

**NOTE!**

Follow the instructions provided in this user manual.

To avoid critical situations read the recommendations and rules before using the mask for the first time and observe them in its further use.

**DANGEROUS!**

Violation of the rules of use, storage or maintenance of the mask can affect its operation and thereby endanger the life of the user.

Before using the mask, perform a visual inspection and check its operability and tightness. It is prohibited to use the mask if:

- It has not passed the functional check or it is damaged;
- Commissioning and maintenance were not carried out by qualified specialists;
- Non-original spare parts were used during maintenance.

People with beards, scars and other face injuries or those wearing glasses will not be able to use the mask safely, because the mentioned factors affect negatively the obturation contour and the air tightness of the mask.

**CAUTION!**

Insufficient obturation may cause the penetration of the air or the hazardous gas from the surrounding atmosphere inside the mask.

Using the mask for other purposes or in any other way than indicated herein or neglecting the instructions and requirements described herein is inadmissible. Also applies to the unauthorized modifications of the product made by persons who are not employees or authorized by DEZEGA SP GUVENLIK URUNLERI SAN. VE TIC. A.S.

1.2. Information on liability

DEZEGA SP GUVENLIK URUNLERI SAN. VE TIC. A.S. is not liable for damages caused by improper use of the product or by its use for purposes other than indicated. Only the owner of the mask is responsible for its integrity and use.

In case of violation of the requirements of this user manual or any of its transportation or storage conditions, the user shall lose the right for compensation and warranty service of the mask.

The manufacturer has the right to make minor constructive changes to the mask design without informing user about them. These minor constructive changes do not affect the mask work or worsen its operational characteristics.

1.3. Manufacturer warranty

The manufacturer guarantees the compliance of its masks with the requirements indicated above in case when all conditions of transportation, storage, and operation of the product are met.

The warranty period of the mask, as well as its service life are specified on the label to the mask.

**NOTE!**

The warranty does not apply to the masks if the conditions of transportation, storage and operation were improper due to the fault of the consumer. White or gray deposits on rubber surfaces are acceptable and are not considered a defect (see section 3.1).

2. CHARACTERISTICS AND PURPOSE

Mask satisfies the performance requirements of the standard EN 136:1998 (CL3) used for the designing stage, considered to be resistant to flame (at the temperature 950+/-50 °C for period not more than 5 sec.) and heat radiation (with the energy flux 8 kW/m² at distance not less 175 mm for time of 20 min). Inhalation and exhalation breathing resistance are below 0,6 mbar, when tested at sinusoidal flow 50l/min (25 cycles/min, 2,0 l/stroke). Effective field of vision not less than 70 %, related to the natural field of vision. Detailed technical characteristics are specified on the label to the mask.

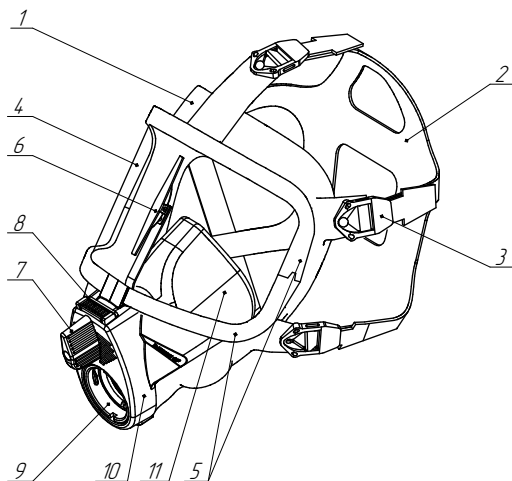
Masks are designed to protect the respiratory system in conditions unsuitable for breathing, as well as to protect the face and eyes from the effects of the irritating effect of smoke and elevated temperatures (due to tightness, resistance to fire / heat and mechanical strength of the visor mask (clauses 7.5, 7.6, 7.7, 7.14, 7.16 of EN 136) during the work of emergency rescue units, the performance of routine and service work assembled with self-contained closed-circuit compressed oxygen breathing apparatus.

The mask must be used only at an ambient temperature from -20 to +60 °C and the relative humidity of up to 100 % at the temperature +40 °C.

2.1. Mask design options

- Connector: quick fit plug in;
- Mask body and inner mask material: EPDM (ethylene-propylene rubber), silicone or chloroprene;
- Mask body size: small (S), medium (M/L), large (XL);
- Inner mask size: medium (M), large (L);
- Head-harness material: chloroprene;
- Drinking device - optional.

Fig. 1. General view



Pos.	Name
1	Mask body
2	Head harness
3	Buckle
4	Visor
5	Visor frame
6	Wiper
7	Flywheel
8	Lock-button
9	Connector complete with a speech membrane
10	Shield
11	Inner mask

2.2. Marking

The mask is marked with the following designations:

- **On the bottom of the connector:**

EN 136:1998 CL 3: reference standard used for the design and certification of the PPE and class number;

 : marking of conformity;

0477: identification number of Notified Body involved in the periodical factory production control with supervised product checks according to REGULATION 2016/425/EU;

ДСТУ EN 136:2003 CL 3: reference to harmonised standard used for the design and certification of the PPE and class number;

 : marking of conformity;

001: identification number of Notified Body involved in the control procedure;

DEZEGA[®]: trade mark;

DEZEGA SP: identification of the manufacturer;

«DEZEGA D-VISION QF» product name;

«Art. QF-E-21C1-UN»: type identification marking. Article explanation is given in section 8.2;

SSSSSTMMYY: 5 digits of serial number, and Manufacturing date in format MM - month and YY - year, symbol «T» between product number and manufacturing date, according to the place of origin - Turkey;

Made in Türkiye/

Зроблено в Туреччині:

 :

place of origin;

symbol «read the manual».

- **On mask body:**

S/ML/XL: mask body size;

part production code: production date and indication of batch.

- **On inner mask:**

M/L: inner mask size;

part production code: production date and indication of batch.

- **On head harness:**

DEZEGA[®]: trade mark.

- **On the connector shield:**

DEZEGA[®]: trade mark;

«DEZEGA D-VISION QF» : inscription.

- **On the visor:**

 : marking of conformity;

0598: identification number of the notified body participating in the periodic factory production control of the visor as a component of the mask.

3. USE

3.1. Environmental safety and protection requirements

During storage, transportation or operation of the mask, white or gray deposit may appear on the surface of the rubber parts, forming a protective film to protect the mask surface from aging and destruction. Deposits does not affect the technical characteristics and protective properties of the mask, and together with other parts and the mask in general, is safe for the environment and human health in accordance with the requirements specified in the above regulatory documents and manual.

Physically healthy people who have undergone a medical examination in accordance with the established procedure are allowed to work in the mask.

Those who use the mask must acknowledge and follow the requirements of the user manual.

The mask must be used only of the fitting size.

3.2. Preparation for use

Before using the mask, make sure that the mask and its components are free of any defects or damage. It is necessary to choose a combination of an external body and the internal mask for each user individually in order to ensure better fit and air tightness in the line of obturation.



NOTE!

Possible options of the mask design are provided in section 2.1.

DEZEGA sizing guidelines are made for initial mask choice, see the Annex and follow instructions for mask size choosing.

Independently from initial mask size choice – it is recommended to ensure that the mask fits you. Start with a standard combination (the average dimensions of the mask body M/L and the inner mask M), which usually are suitable for most users. If this combination does not provide sufficient tightness another combination should be selected.



DANGEROUS!

Users must use masks only of their own size.



IMPORTANT!

Make sure that your hair, mask elements or other objects do not get under the seal line; otherwise, the mask will not seal tightly.

A ready-to-use mask is worn on a belt or on the chest attached to the breathing apparatus. Several drops of the anti-fogging agent, for example DEZEGA Clear-Vision, must be applied to the wiper blade and to the mask visor according to the manufacture requirements before using the mask. We strongly recommend the use of antifogging products approved by the manufacturer.

When the visor gets foggy and visibility deteriorates turn the wiper blade flywheel to remove the condensate.



NOTE!

Do not use the mask with a dry wiper blade.

3.3. Putting on the mask

1. Extend the straps of the head harness as much as possible.
2. Stretch the head harness with both hands.
3. Put your chin into the mask and pull the head harness straps over your head (figure 2). Pulling the straps, make sure that the head harness is correctly seated and not twisted.

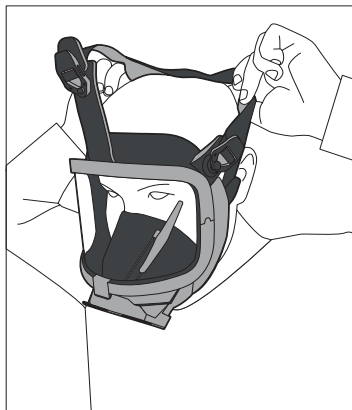


Fig. 2

4. Adjust the mask on your face and tighten the belts securely and evenly, as shown in Figure 3. Firstly, tighten the lower belts; then the temporal ones; and, lastly, the front ones. To loosen tension, slightly pull off the buckles, which will slightly lower the straps back.



Fig. 3

3.4. Checking the closeness of fitting

To check whether the mask body is fitted properly to the face follow the steps described below before each use.

1. Put on the mask according to instructions given in section 3.3 of the manual.
2. Close the mask connector using special plug (figure 4).
3. Fit test with the help of inhalation: when inhaled the negative pressure is required; for this, take a deep breath and create a vacuum under the mask and hold your breath for a few seconds: the underpressure under the mask must remain unchanged.
4. If necessary, retighten the belts. If the fit test is failed, do not use the mask.

After the satisfactory check the mask can be connected to the breathing apparatus.



Fig. 4



DANGEROUS!

Checking for a tight fit of the mask is required before each use.

3.5. Removing the mask

1. Loosen the head harness by pulling the buckles forward with your thumbs (figure 5).



Fig. 5

2. Take the mask by the shield and remove it over your head (figure 6).



Fig. 6

4. MAINTENANCE

4.1. Maintenance instructions

Repair and maintenance must be carried out only by authorized service center, except operations directly described in this user manual.

Operations described in sections 4.8 and 4.9 - must be performed only by persons trained certified and authorized by the manufacturer, because it can increase (cause) the risk of damage of the mask or improper sealing. For all other repairs not described in this manual - authorization of the manufacturer required for every single case.

The modifications of the mask or parts not specified and not approved by the manufacturer - are forbidden and can lead to failure of the mask and the voiding of warranty.

The manufacturer is not liable for damages caused by incorrect or improper use of the mask or due to technical maintenance by any other company (including trained and certified end users who obtain authorization from DEZEGA to perform such activities), except DEZEGA SP GUVENLIK URUNLERI SAN. VE TIC. A.S. or its authorized manufacturers / service centers.

CAUTION!

The mask must be repaired only by persons authorized by the manufacturer.

4.2. Intervals between maintenance cycles

Activity	Maximum Intervals				
	Before use	After use	Every six months	Every two years	Every six years
Cleaning and disinfection*)		X		X	
Visual inspection, checking the serviceability and air-tightness**		X	X		
Speech membrane replacement					X
O-ring of the speech diaphragm replacement					X
Fit test by the user	X				

* Cleaned and disinfected masks must be stored airtight-packed for 2 years. Otherwise, the mask must be cleaned and disinfected at least once per six months. After each cleaning and disinfection the bodies of the masks must be inspected.

** For airtight-packaged masks that are not affected by increased climatic and mechanical load (for example, during transportation), this interval can be increased up to 2 years.

4.3. Visual inspection and serviceability check

Visual inspection:

1. Mask elements for damages such as deformation, adhesion, fracture or thermal damage, as well as for cracks or other signs of wear on external and internal parts.
2. Mask elements must fit tightly to each other without skewing and foreign objects at the conjunctions.
3. Items with defects or damage must be replaced immediately.

Serviceability check:

1. After visual inspection of the mask, it is necessary to test the movement of the wiper. The flywheel must not have a backlash; when turning the wiper, the extreme positions must be achieved without significant effort.
2. The wiper blade must not be damaged; it must be clean, fit tightly against the inside of the visor over the entire area and not leave any scratches on the glass surface.
3. Head harness buckles must fix the straps reliably and prevent their self-loosening. When the buckles are loosened, the head harness straps must move freely in them.
4. The connecting thread must correspond to the type indicated on the mask label and be serviceable. The connecting screw must be screwed in without significant effort until the thread completely enters the center bushing. In case of incomplete screwing or detection of the significant resistance when screwing, clean the hole of dirt and check the condition of the thread.

4.4. Mask air-tightness check

For this test, it is necessary to use special mask control instruments and devices, which are supplied by the manufacturer upon the customer's order see Section 8.4 for extras.



NOTE!

To test the mask for leakage with DEZEGA CheckUp, it is recommended to use the Dummy Head DEZEGA DH 1000.

The mask is checked for leaks according to the corresponding user manual of the control device.

The check procedure is as follows:

1. Connect the Dummy Head DEZEGA DH 1000 (hereinafter Dummy Head) to the control device.
2. Close the hole on the front side of the head with the supplied plug.
3. Check the tightness of the control device with the attached Dummy head according to user manual.
4. After the successful check, remove the plug and put the mask on the Dummy Head.
5. Tighten the head harness belts and make sure that the mask body fits tightly over the entire area of the Dummy Head. To facilitate sealing, the Dummy Head can be moistened with water or a special water-containing gel in the line of obturation when the mask is put on.
6. Close the mask connector securely with plug. The plug is delivered by the manufacturer upon the customer's order (see section 8.4).
7. Using a control device, create a negative system pressure of 1000 Pa (10 mbar).
8. Measure the pressure change in 1 minute. The mask is considered airtight if the pressure drop does not exceed 100 Pa (1 mbar) per minute.

If the pressure drop exceeds 100 Pa (1 mbar) per minute, the detachable connections of the mask must be checked, as well as proper assembly of the mask and the control device. Then put the mask on the Dummy Head and repeat the test. If leakage cannot be stopped, contact the Service Centre for repair.



CAUTION!

Leaking masks must not be used.

4.5. Speech membrane and o-ring replacement

1. Lower the membrane lock-spring downwards (figure 7, item 1).
2. Pull out the speech membrane by pulling it upwards (figure 7, item 2).
3. Install a new O-ring into the new speech membrane.
4. Install the speech membrane into place, making sure that the protrusion on its housing fits in the groove of the seat, and lock it in place.
5. Check the mask for air tightness [section 4.4].

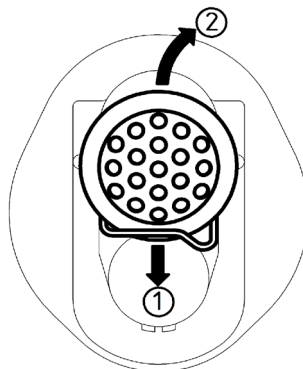


Fig. 7

4.6. Wiper blade replacement

1. Pull out the rubber plug.
2. Loosen the screw securing the wiper.
3. Pull out the wiper.
4. Remove the screw (figure 8, pos. 1) from the nut (figure 8, pos. 2) that fixes the brush (figure 8, pos. 3), and replace it.
5. Assemble the mask by following the steps in the reverse order.
6. Check the mask for air tightness [section 4.4].

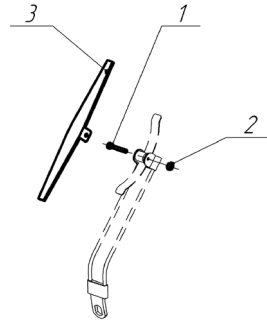


Fig. 8

4.7. Replacing the inner mask

The replacement must be performed in the following order:

1. Taking the inner mask at the top of the nosing, pull it from the groove of the connection box.
2. To install the inner mask, pull out the bottom edge of the mask body and install the inner part into the groove of the connection box, starting from top to bottom, along the entire contour of the groove.

Make sure that the inner mask is aligned properly and not skewed.

4.8. Visor replacement



NOTE!

Special skills and knowledge are required to perform this operation.



CAUTION!

This operation must be performed only by persons trained, certified and authorized by the manufacturer.

1. Remove the screws (figure 9, pos. 1) from the visor frame (figure 9, pos. 2).
2. Pull the parts of the frame apart and remove the upper half of the frame.
3. Remove the visor (figure 9, pos. 3) from the groove in the mask body (figure 9, pos. 4).
4. Place the visor into the groove, aligning it along the centerline. Make sure the body of the mask evenly covers the visor along the contour.
5. Install the upper half of the frame and tighten the halves with screws.
6. Check the mask for air tightness [section 4.4].

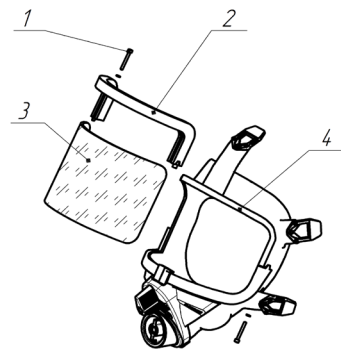


Fig. 9

4.9. Drinking device replacement



NOTE!

Special techniques and knowledge are required to perform this operation.



CAUTION!

This operation must be performed only by persons trained, certified and authorized by the manufacturer.

1. Unscrew and remove security cap with strap, nut and washer (figure 10, pos. 1-3).
2. Remove valve and nipple assy (figure 10, pos. 4).
3. If necessary, replace parts and assemble valve as shown (figure 11, pos. 5-7) or take new drinking device.
4. Install valve and nipple assy to the mask and place nipple in position when it lightly touches your lips when wearing mask, and it is easy to get rid of it, during the usage.
5. Assemble the drinking device by following the steps in the reverse order.
6. Check the mask for air tightness [section 4.4].

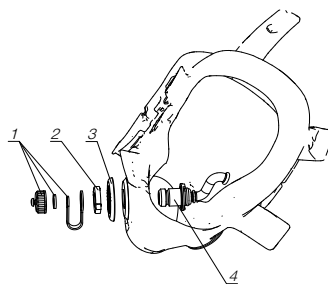


Fig. 10

Component-wise view of the drinking device.

Pos.	Part name	Q-ty
1	SKTB.08.MDQF.01.00.001 Nut	1
2	SKTB.08.MDQF.01.00.002 Strap	1
3	SKTB.08.MDQF.01.00.003 Nut	1
4	SKTB.08.MDQF.01.00.004 Washer	1
5	SKTB.08.MDQF.01.00.005 Nipple	1
6	SKTB.08.MDQF.01.00.006 Retaining ring	1
7	SKTB.08.MDQF.01.01.000 Valve	1
8	SKTB.08.MDQF.01.00.007 O-ring	1

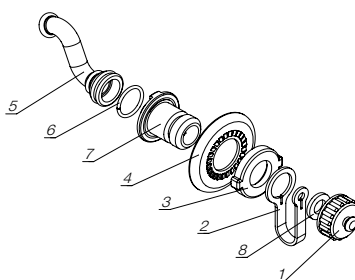


Fig. 11

4.10. Drinking device installation

If your mask is supplied without drinking device, you may order separately the installation of this option, by calling to authorized service center. Or contact with local representative in your country or call for DEZEGA headquarters to get information for special training and authorization to perform maintenance and/or installations of the options (drinking device) by yourself.

Spare parts ordering information, available options and extras are given in section 8.1 and 8.4.

5. CLEANING AND DISINFECTION

Cleaning and disinfection of the mask must be carried out according to the cleaning schedule at intervals specified in section 4.2.

5.1. Cleaning

After each use, the mask must be wiped with a damp soft cloth to remove sweat and condensation. In case of severe contamination, the mask can be disassembled and washed with a neutral detergent dissolved in water at temperatures up to +40 °C, if necessary.



CAUTION!

Prohibited to clean rubber and silicon parts with solvents such as acetone, alcohol etc. and products containing abrasive particles.

Should be used only detergents recommended by the DEZEGA.

Cleaning should be performed in the following order:

1. Remove the inner mask.
2. Remove the drinking device's nipple (if installed).
3. Remove speech membrane as shown in section 4.5.
4. Clean the mask with warm water and a neutral detergent dissolved in water at temperature up to +40 °C. Rinse thoroughly under running water.
5. Disinfect the mask. The removed parts should be cleaned and disinfected separately.
6. Dry the mask and the components. Assemble the mask by following the steps in the reverse order.
7. Check the mask for air tightness [section 4.4].

5.2. Disinfection

The mask should be disinfected when commissioned, during the annual inspection, after each use, under the doctor's instructions after the detection of infectious diseases, and when it is delivered over for a long period of storage (over a month).



CAUTION!

Usage of organic solvents (petrol, kerosene, acetone) for disinfection is prohibited.

Should be used only disinfectors recommended by the DEZEGA to avoid components damage.

Disinfection should be carried out in the following order:

1. Disassemble and clean the mask [section 5.1].
2. Disinfect the mask with the recommended disinfectant. Dip the mask into a disinfectant for 15 minutes.
3. Rinse the mask thoroughly under running water.
4. Dry the mask and the components. Assemble the mask.
5. Check the mask for air tightness [section 4.4].

6. TRANSPORTATION AND STORAGE

Transportation of packaged masks must be carried out in closed transport. Masks must be stored in transport packaging in a dry, dust-free environment in compliance with the storage conditions of Category 1 (no restrictions due to the impact of a combination of climatic factors), separately from flammable substances and substances that can worsen the properties of mask materials.

The masks must be packed in the original packaging of the manufacturer with the marking for the transportation separately from self-contained closed-circuit compressed oxygen breathing apparatus. If the mask has been previously used, it must be cleaned, disinfected and dried before being delivered for storage in a dry, cool, dust-free place in the appropriate bag or in the original package so that it does not become deformed. Storage temperature: from -15 °C to +25 °C.

During storage, the boxes with masks must be protected from direct sunlight and be at least 1 m away from the heating devices.



CAUTION!

The boxes with masks must not be exposed to direct sunlight or heat radiation.

7. DISPOSAL

Disposal of the mask must be carried out in accordance with the rules and regulations of the country in which it is operated. For this purpose, apply for clarifications to the relevant government agencies.

8. ORDER DETAILS

8.1. Component-wise order of spare parts for the mask

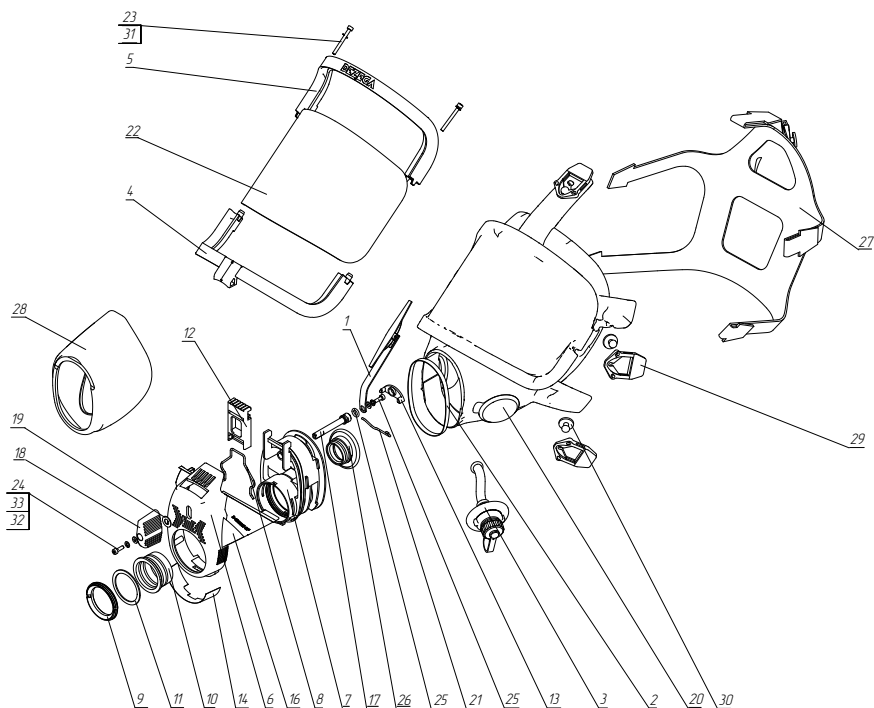


Fig. 12. Component-wise view of the mask with quick fit plug in

Pos.	Part name	Quantity
1	SKTB.08.MD.02.00.000-01 Wiper	1
2	SKTB.08.MD.04.00.000 Clamp	1
3	SKTB.08.MDQF.01.00.000 Drinking device	1
4	SKTB.08.MD.00.00.008 Bottom frame	1
5	SKTB.08.MD.00.00.009 Upper frame	1
6	SKTB.08.MDQF.00.00.001 Shield	1
7	SKTB.08.MDQF.00.00.002 Box	1
8	SKTB.08.MDQF.00.00.003 Spring	1
9	SKTB.08.MDQF.00.00.004 Nut	1
10	SKTB.08.MDQF.00.00.005 O-ring	1
11	SKTB.08.MDQF.00.00.006 Washer	1

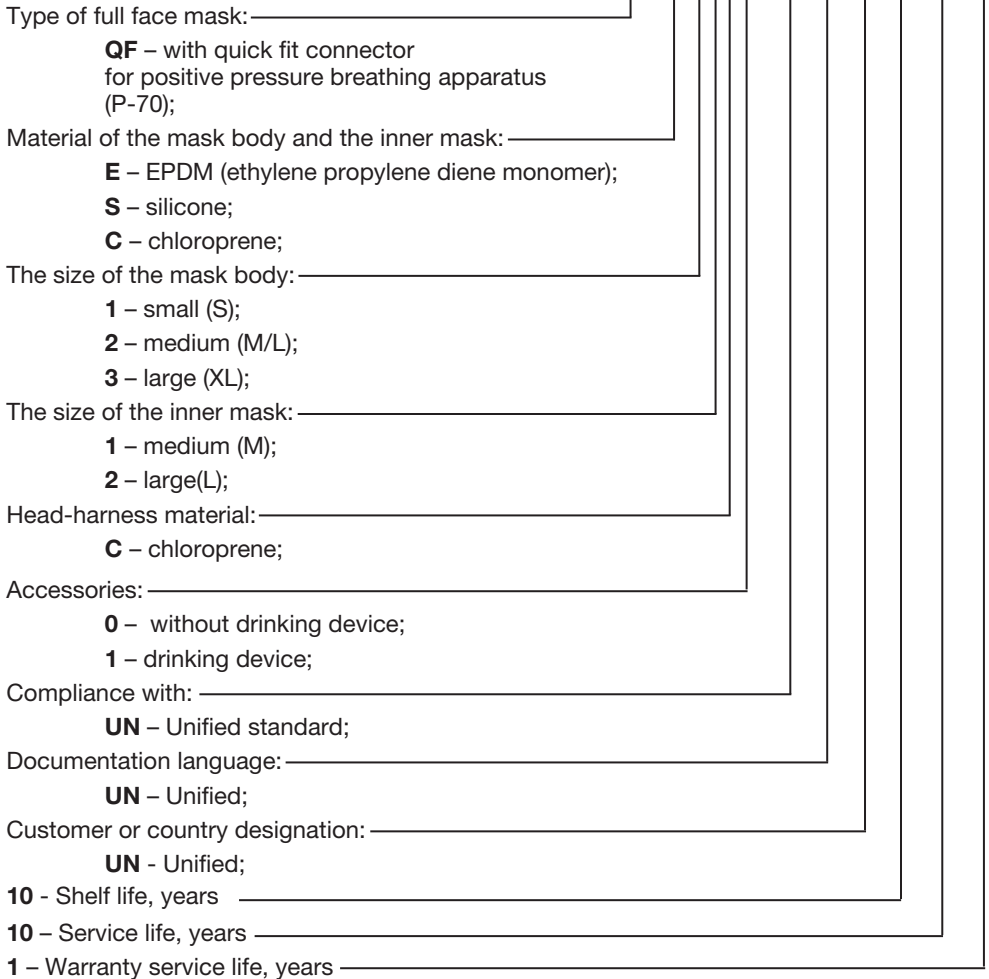
Pos.	Part name	Quantity
12	SKTB.08.MDQF.00.00.007 Button	1
13	SKTB.08.MDQF.00.00.008 Cap	1
14	SKTB.08.MDQF.00.00.011 Sticker	1
15	SKTB.08.MDQF.00.00.009 Sticker	1
16	SKTB.08.MDQF.00.00.009-01 Sticker	1
17	SKTB.08.MDQF.00.00.012 Shaft	1
18	SKTB.08.MD.00.00.003 Flywheel	1
19	SKTB.08.MD.00.00.005 Washer	1
20	SKTB.08.MDQF.00.00.013 Mask body Size S, EPDM	1
20a	SKTB.08.MDQF.00.00.013-02 Mask body Size S, NR	
20b	SKTB.08.MDQF.00.00.013-04 Mask body Size M-L, EPDM	
20c	SKTB.08.MDQF.00.00.013-06 Mask body Size M-L, NR	
20d	SKTB.08.MDQF.00.00.013-12 Mask body Size M-L, silicone	
20e	SKTB.08.MDQF.00.00.013-08 Mask body Size XL, EPDM	
20f	SKTB.08.MDQF.00.00.013-10 Mask body Size XL, NR	
21	SKTB.08.MD.00.00.015 Spring	1
22	35505-03 Visor with Hard Coating & Anti Fog, Interspiro	1
23	Hexagon socket head cap screw ISO 4762-M3x30-A2-070	2
24	Hexagon socked button head screw ISO 7380-1-M3x10-A2-270	4
25	O-Ring 006-009-19-2-5 ГОСТ 18829-2017	1
26	99372-51 Speech diaphragm	1
27	31306-02 Head Harness Facelift DEZEGA	1
28	95002-06 Inner mask, EPDM, Medium	1
28a	95 002-07 Inner mask, NR, Medium	
28b	96756-06 Inner mask, Large, EPDM	
28c	96756-07 Inner mask, NR, Large	
28d	95013-04 Inner mask, silicone, Large	
29	32038-01 Head harness buckle, assy	5
30	95016-02 Mushroom	5
31	Hexagon regular nut ISO 4032-M3-A2-70	2
32	Washer ISO 7089-3-200HV-A2	2
33	Spring lock washer DIN 7980-3-A2	2

8.2. Ordering the full face mask

Example of designation of the mask in technical documentation and when ordering: Full face mask DEZEGA D-VISION QF-E-21C1-UNUNUN-10-10-1

Article explanation:

QF-E-21C1-UNUNUN-10-10-1



8.3. Scope of supply

The mask is delivered in accordance to order and article (see section 8.2) and with minimum complete set described below:

- Full face mask DEZEGA D-VISION (assembly) - 1pc.
- Mask bag (For mask storage) - 1pc.
- User manual - 1pc.
- Label - 1pc.
- Tag (for applying personal information) - 1pc.
- Cover (To protect the tag) - 1pc.
- Packing - 1pc.

8.4. Control devices and accessories that are additionally supplied by separate order

Name	Description
21.200-3/D-RUEU-2 DEZEGA Clear-Vision, 100 ml	Anti-fogging agent (spray), 100 ml
Bracket SKTB.08.MDQF.10.00.002	Bracket for external speaking device
04.DH1-EUEN-5-1 DEZEGA DH 1000	A Head (Dummy Head) for connecting the mask to the control device
EBV250/D-RUEN-3 DEZEGA D-Tight, 250 g	Gel for increasing the airtightness of the Dummy and FFM body connection and reducing the wear of Dummy rubber parts
DC2-1111-1000-F DEZEGA CheckUp	Multipurpose digital control device for testing the mask for leaks
DEZEGA Sizing Tool	Tool for assistance in initial selection of the correct mask size
Mask bag SKTB.08.MD.12.04.000	For mask storage
Tag SKTB.08.MD.12.00.002	To apply user initials
Neck strap SKTB.08.MDQF.02.00.000	To handle while cleaning, disinfection, drying and storing the mask
Plug SKTB.08.MDQF.10.00.003	To check the mask for air tightness
Cover SKTB.08.MD.12.00.001	To protect the tag SKTB.08.MD.12.00.002
Drinking device SKTB.08.MDQF.01.00.000	Drinking device installation kit
DEZEGA disinfect	For mask disinfection
DEZEGA detergent	For mask cleaning

Address of the authorized Service Center.

Contact with local representative in your country or call for DEZEGA headquarters to get information about Service Center in your region.

Legal address of the manufacturer.

DEZEGA SP GÜVENLİK ÜRÜNLERİ SANAYİ VE TİCARET ANONİM ŞİRKETİ
EGE SERBEST BÖLGESİ ZAFER SB MAH. NİLÜFER

SK.NO:30 GAZİEMİR, İZMİR

Tel.: +90 232 251 03 94

www.dezega.com

info@dezega.com

ANNEX

DEZEGA mask sizing guidelines

It is very important to obtain a correctly fitting face mask body and inner mask combination for user's safety and comfort. This sizing guidelines are available to assist in initial selection of the correct mask size.

Following the guidelines of the face measurement system (mask body sizing chart, face sizing template, DEZEGA sizing tool) is available to determine which size combination will best fit you.

Simply follow the directions to obtain the optimal size for your head and face shape.

**NOTE!**

DEZEGA Sizing tool is only to be used as a general reference guide.

1. Mask body sizing chart.

Height	Weight			Height
	45-69 kg	70-82 kg	83-102 kg	
152-164 cm	S	M	M	5'-5'4"
165-174 cm	M	M	XL	5'5"-5'8"
175-181 cm	M	XL	XL	5'9"-5'11"
182-190 cm	XL	XL	XL	6'-6'3"
	100-154 lbs	154-182 lbs	182-223 lbs	
	Weight			

**NOTE!**

The above chart is only a guideline, to confirm your size – take accurate measurements of your face and use face sizing template.

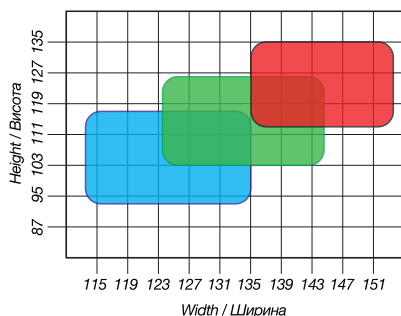
2. Face sizing template.

How to take accurate measurements:

Eye to chin length (Height) – take a piece of string and place it between the eyes on the top of the nose bridge, run the string over the tip of your nose and down to just under the chin. This is height you're looking for.

Outer edges face length (Width) – is measured as described above, from the outer edges of the face/front part of Temples, as the maximum horizontal width of the face along the zygomatic arches.

Choose the appropriate size from the table below. If measured results are on or near the boundary between two sizes, select the size which is closer to the center of appropriate colored zone.



Choose one of two sizes of the inner mask correspond to Eye to chin length:

Medium (M) – up to 120 mm

Large (L) – 121 mm and more

3. DEZEGA sizing tool.

Overall view of the tool is shown below, you may order DEZEGA sizing tool from your local dealer of DEZEGA® or download it from the website www.dezega.com

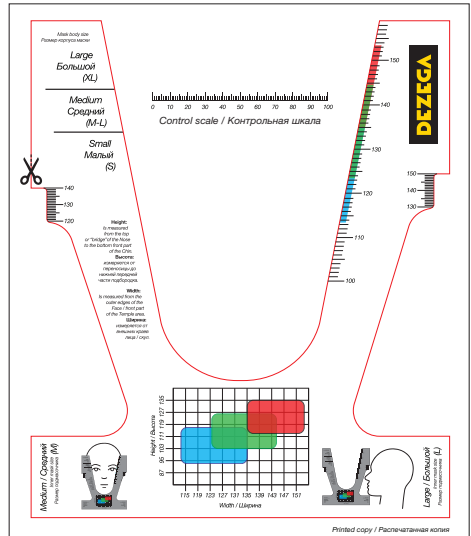
If you've downloaded it, do the following:

- print out DEZEGA sizing tool on high density paper;
- verify measurement by "Control scale" when making copies;
- adjust the scale if needed;
- cut out the center and side gaps by the red line.

To choose mask body size - place the tool to the face diagonally along a line from the point of the chin to the widest point of the cheekbone.

Choose the appropriate size by the scale from the left, appropriate size zone shall be visible on the eye line. If measured results are on or near the boundary between two sizes, select the larger size.

To confirm your size, you may use the scale from the right, when holding tool as described above, and make mark on the scale at the opposite point of contact to the template and cheek-bone.



To choose inner mask size – place tool vertically in front of your face, and put bottom part of your chin to the medium size template (left), if upper part touches the bridge of your nose or the area above it – Medium fits you, otherwise do the same with Large template (right).

To confirm your size, you may use the scale at the inner mask template, when holding tool as described above, make a mark on the scale at the point where the template touches the bridge of your nose.

When confirming your size – choose the appropriate size from the table in the template. If measured results are on or near the boundary between two sizes, select the size which is closer to the center of appropriate colored zone.

Choose one of two sizes of the inner mask corresponding the length from the eyes to the chin:

Medium (M) – up to 120 mm

Large (L) – 121 mm and more

If the mask is small, the user may lose its seal performance and protection. The mask will be uncomfortable to wear and the field of view will be reduced.

If the mask is large, the operator may also lose its seal performance and protection. In this case, the user will feel the fit loosening of the mask and its possible slipping during operation.

